



SHAPE

DIGITAL NON-INVASIVE FAT & CELLULITE REDUCTION THERAPY



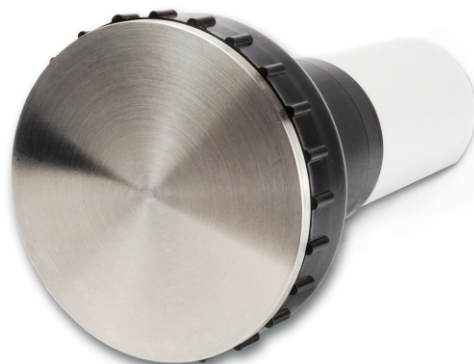
Shapes your body safely with the non-invasive method. It is based on Radio Frequency (RF) waves. RF waves been found to have many applications, one of which is treating fat and cellulite. For many people, getting rid of excess fat can be a lifelong battle. Now, dermatologists are finding that the introduction of non-invasive fat removal technologies is opening the door for more people to remove stubborn fat, safely and effectively.

For many years various versions of these machines have been used by surgeons, physicians and beauticians. Shape machine can be used to release cellulite and fat safely for disposal by the body. Our invention has been to redesign the whole machine to bring the price down to a mass market. The Radio Frequency (RF) is the high-tech beauty treatment, adopts the non-invasive radio frequency technology, tightens and makes the skin smooth from parts to body.

Typical areas of treatment include, Arms, Abdomen and love handles, Buttocks and Thighs. Fairly quick results are usually visible and improve over a two to six month time following treatment sessions.

This is a pain-free and comfortable way to get rid of unwanted fat, contour and tone your body.

Generally for a body a course of 6-8 treatments are needed, and for the face a course of 6 treatments are needed at one week intervals. However in order to gain the full benefits, it is recommended that you lead a healthy and balanced lifestyle.



RF Probe

Shape



Technical Specifications (Control Unit)

Supply Voltage	90-265V AC, @ 50-60 Hz
Power	100 VA
EN60601-1 Class	II
EN60601-1 Type	BF
Power entry	Panel mounting IEC C14 inlet for three wire detachable cable.
Fuse	5Amp, 5X20mm Glass cartridge, Fast Blow.
Energy Levels	1 to 10
Duration	1 to 20 minutes
Indicators	LED indicators for TREATMENT STATUS
Display	LCD
Keys	To set all parameters
Weight	4 kg. approx
Dimensions	290 W X 127 H X 292 D mm
Degree of protection	IP20
<i>Operating Conditions</i>	
Temperature	15° - 35° C
Relative Humidity	30 ~ 75% non-condensing
Atmospheric Pressure	700 ~ 1060 hPa
<i>Storage and transport Conditions</i>	
Temperature	-10°C to +40°C
Relative Humidity	20 ~ 90% non-condensing
Atmospheric Pressure	500 ~ 1060 hPa
Hand Piece	
Dimension	100mm L X 13mm Ø
Weight	250 gms (approx.)
Sterilization methods	The Hand Piece can be sterilised with Ethylene Oxide, or Formalin vapours.

Manufactured by :



Apex MediTech

S No.635/1, Plot 49, Vaibhav Society,
Canara Bank Lane, Off Swami Vivekanand Road,
Bibwewadi, Pune 411037, India
Tel : ++91(20) - 24410630, 24410634
E-mail : sales@apex-meditech.com

Quality approved to :
ISO 13485:2016
ISO 9001:2015

www.Apex-Meditech.com

Specifications are subject to change without prior notice

Shape